

**CERTIFIED LAND CORNER RECORDATION**

DESCRIPTION OF CORNER EVIDENCE FOUND, AND ORIGINAL RECORD (If known)

LOCATION S. 3 S. 2 S.10 S.11 T.12N.,R.64W. 6th P.M.	Found sandstone, 8" x 9"; top portion broken, lower portion (9" x 9" x 9") in place. Five grooves faintly visible on south face of top portion. G.L.O. record - Sandstone, 17" x 10" x 8" - 1874.
---	--

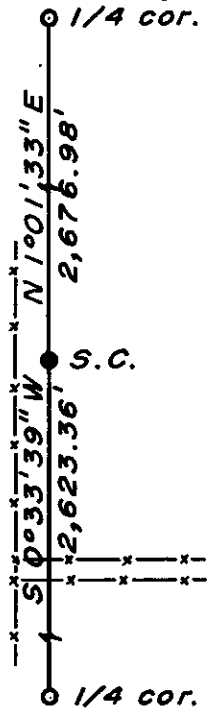
DESCRIPTION OF MONUMENT AND ACCESSORIES ESTABLISHED TO PERPETUATE THE ORIGINAL LOCATION OF THIS CORNER:

At the corner: Set a 1½" dia. x 30" long (concrete-filled) iron pipe with brass cap.  
 Accessories: Left stone as memorial.

SKETCH, WITH COURSE AND DISTANCE TO ADJACENT CORNER IF DETERMINED IN THIS SURVEY.

(May Sketch or Paste Reproduction on Reverse Side.)

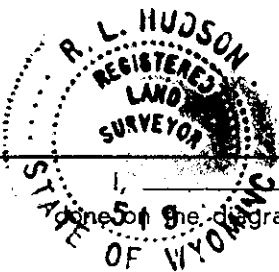
Basis of Bearing - By solar observation.  
 Distances based on measurements by electronic means.



Brass cap set 4" above surface.  
 Brass cap stamped:

T.12N. R.64W.  
 S.C.  
 S. 3 S. 2  
 S.10 S.11

LS 519                      1979



I, R.L. Hudson certify that I have carefully performed ~~or reviewed~~ the work done on the diagrammed corner as reported on this recordation form and approve the same.

R.L. Hudson Wyoming L.S. No. 519  
 Signature of Surveyor                      Registration No.

STATE OF WYOMING,  
 Office of Clerk and Recorder,  
 County of Taramie

534724

This "corner record" was filed for record on the 6 day of July, 19 79, was noted on the cross-index plat and is assigned page No. \_\_\_\_\_, in book, No. \_\_\_\_\_.

Janet C. Whitehead  
 County Official

Cross Index No. <u>517</u>	T. _____	R. _____	Mer.
	T. <u>12</u>	R. <u>64</u>	Mer.
	T. _____	R. _____	Mer.
	T. _____	R. _____	Mer.
	T. _____	R. _____	Mer.
	T. _____	R. _____	Mer.

534721

Photographed..... ✓

Indexed..... ✓

Posted..... ✓

Assessor.....